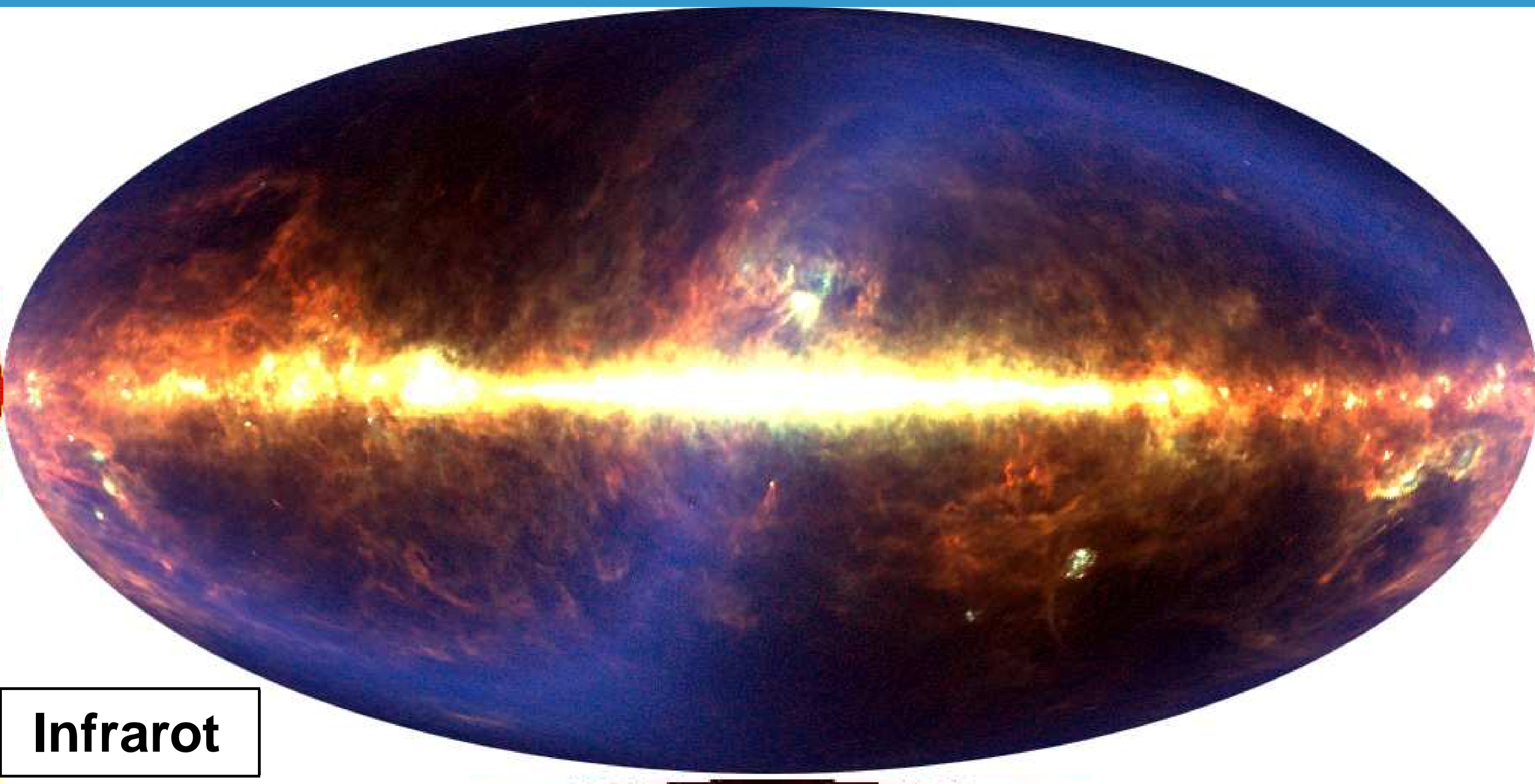
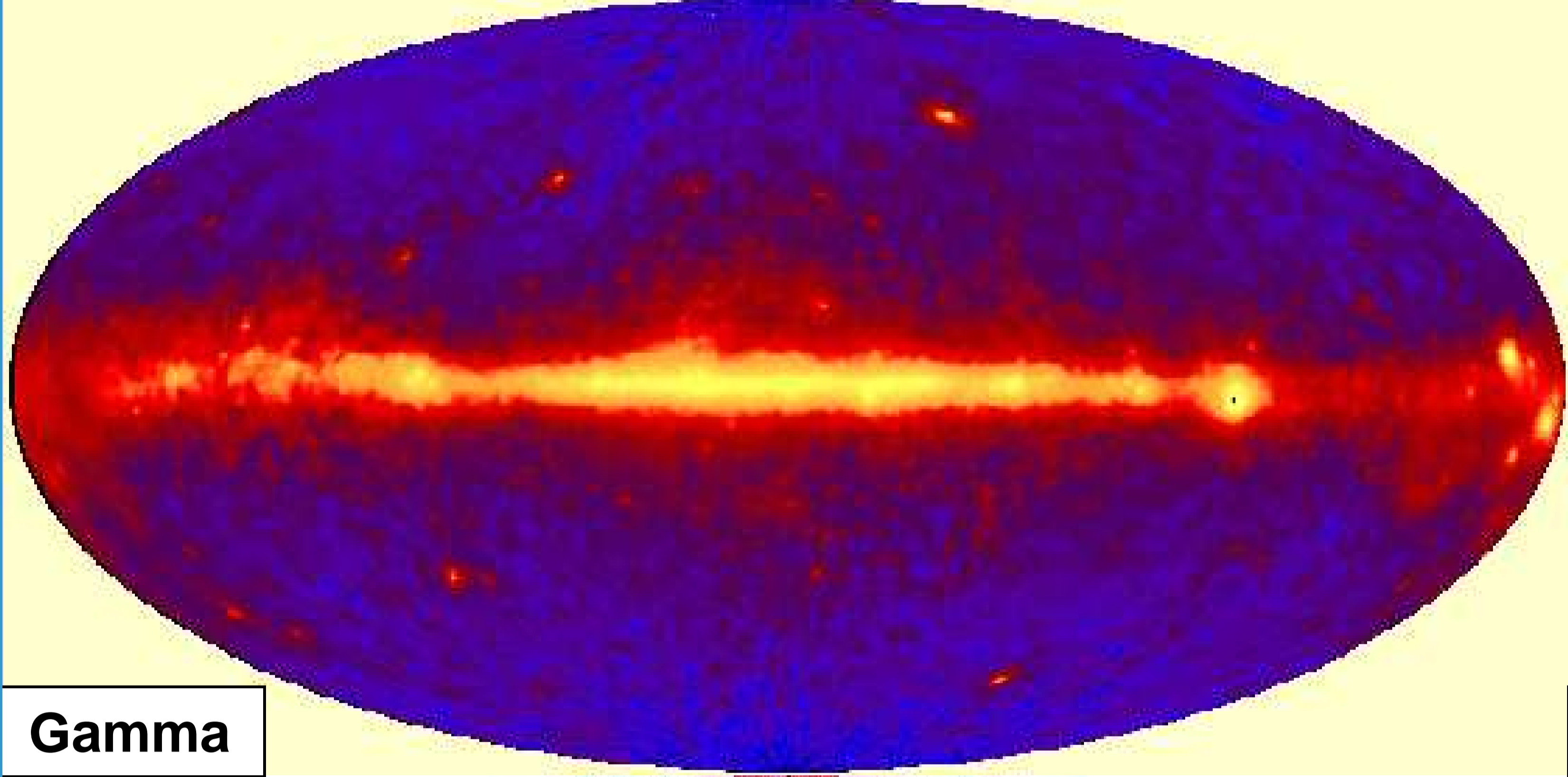


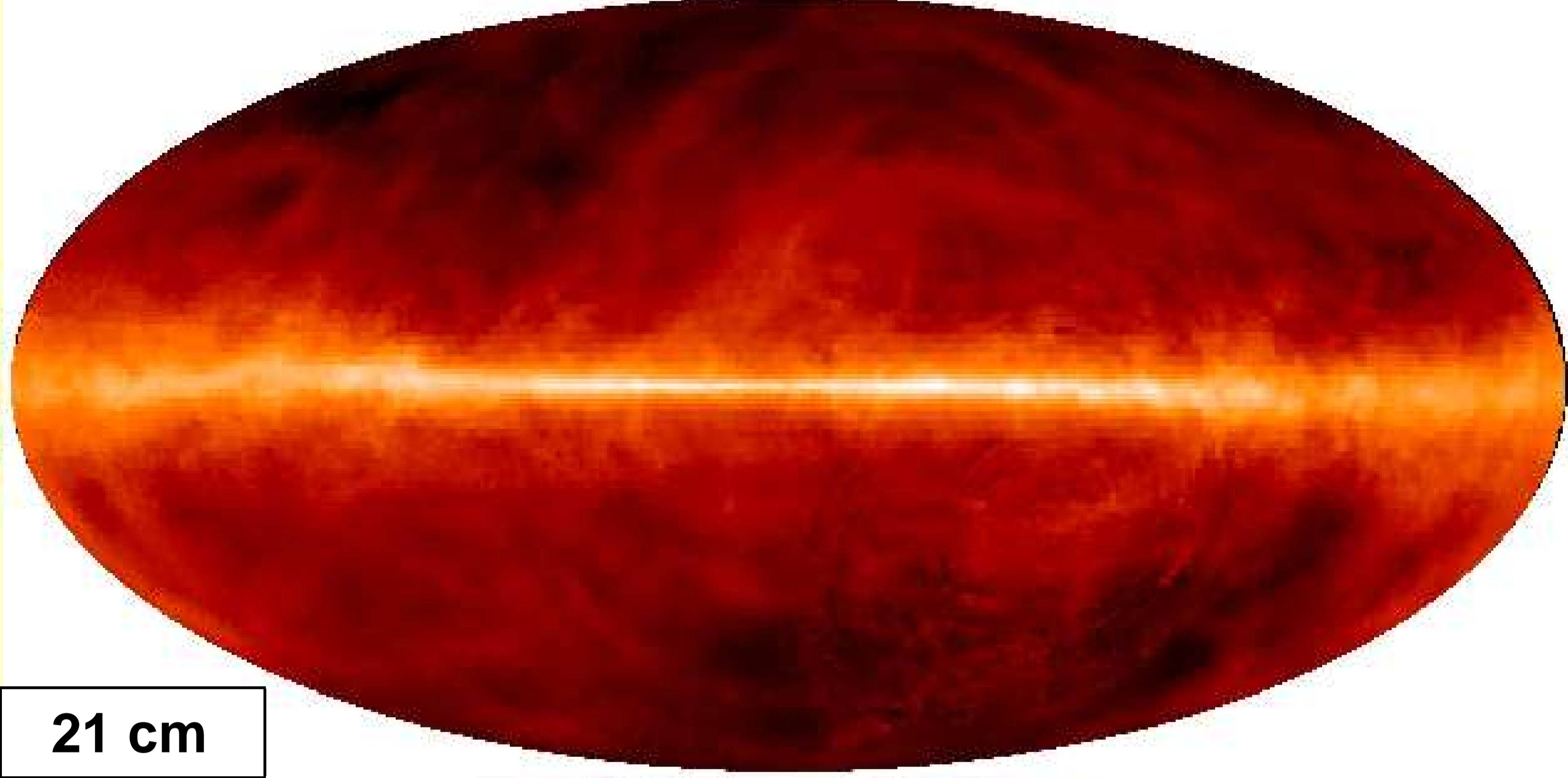
1.8 MeV



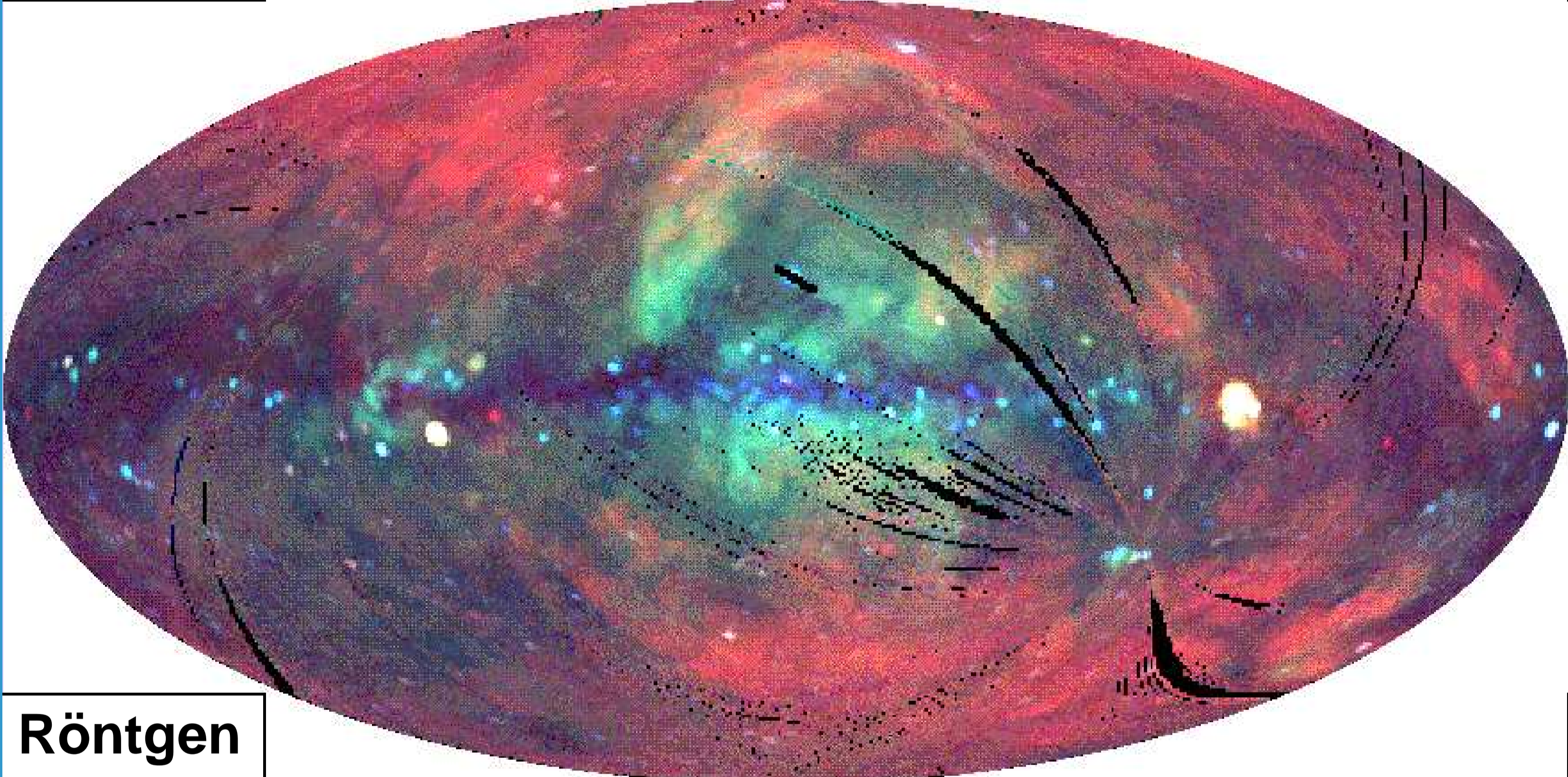
Infrarot



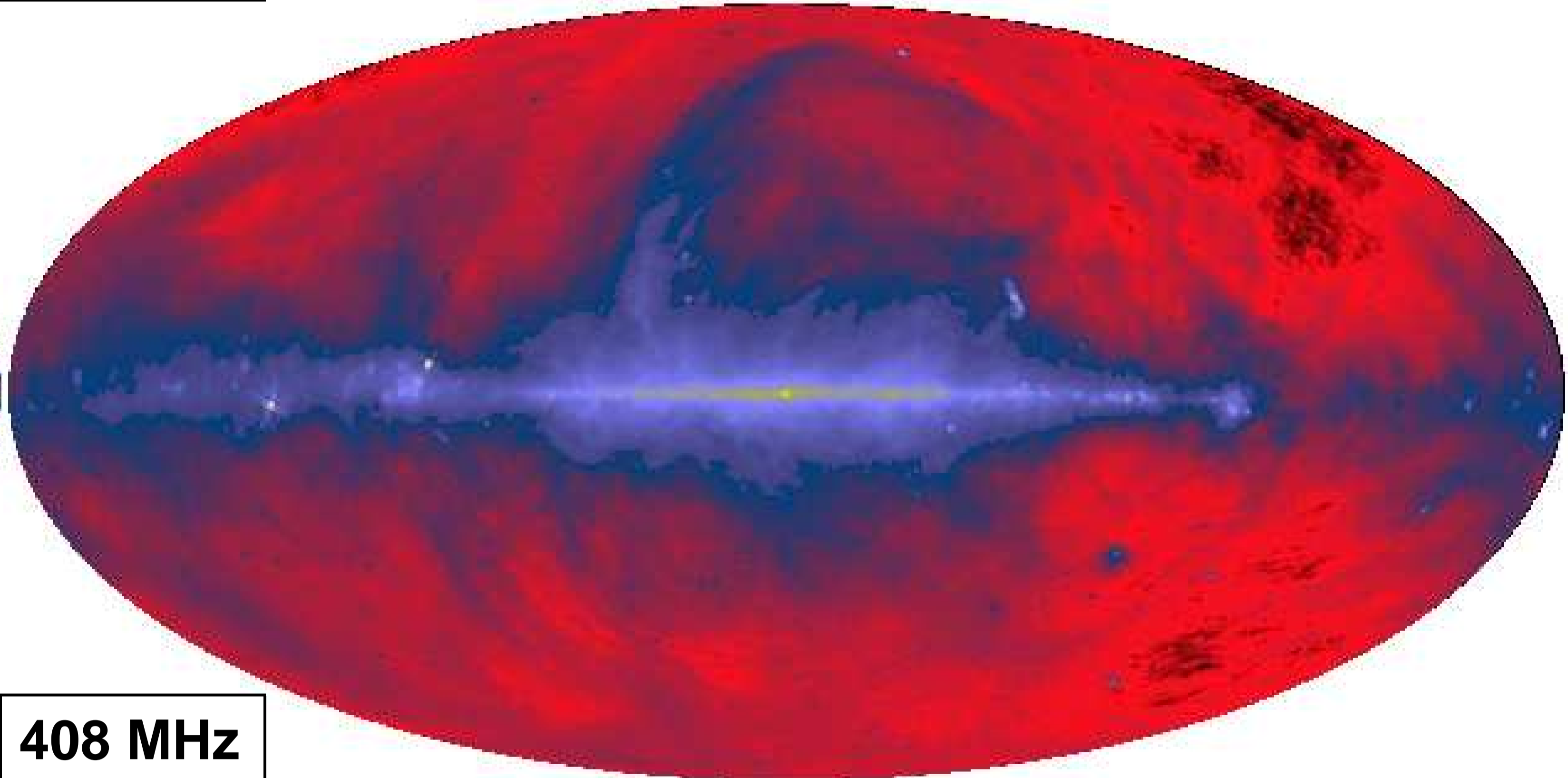
Gamma



21 cm



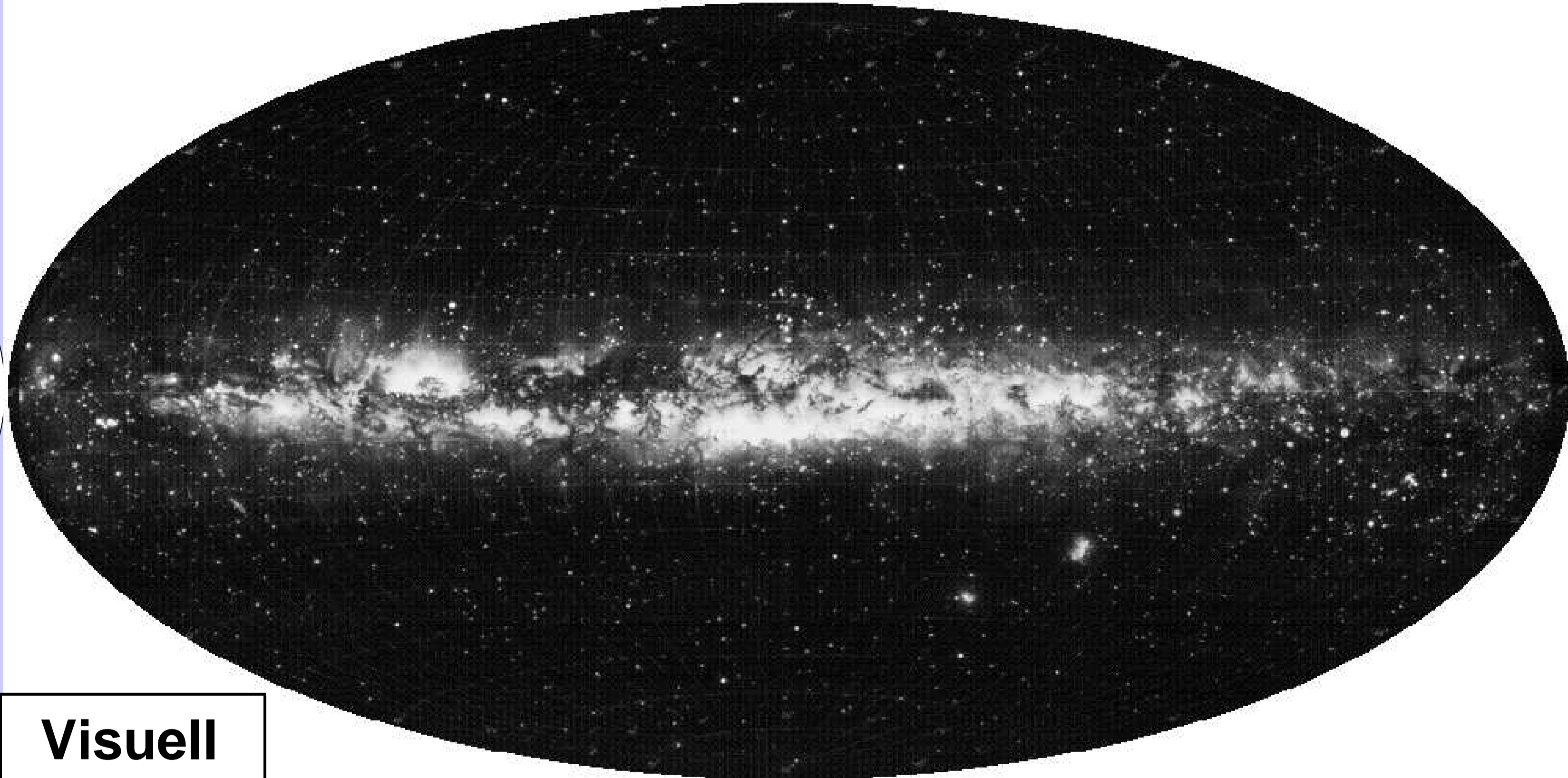
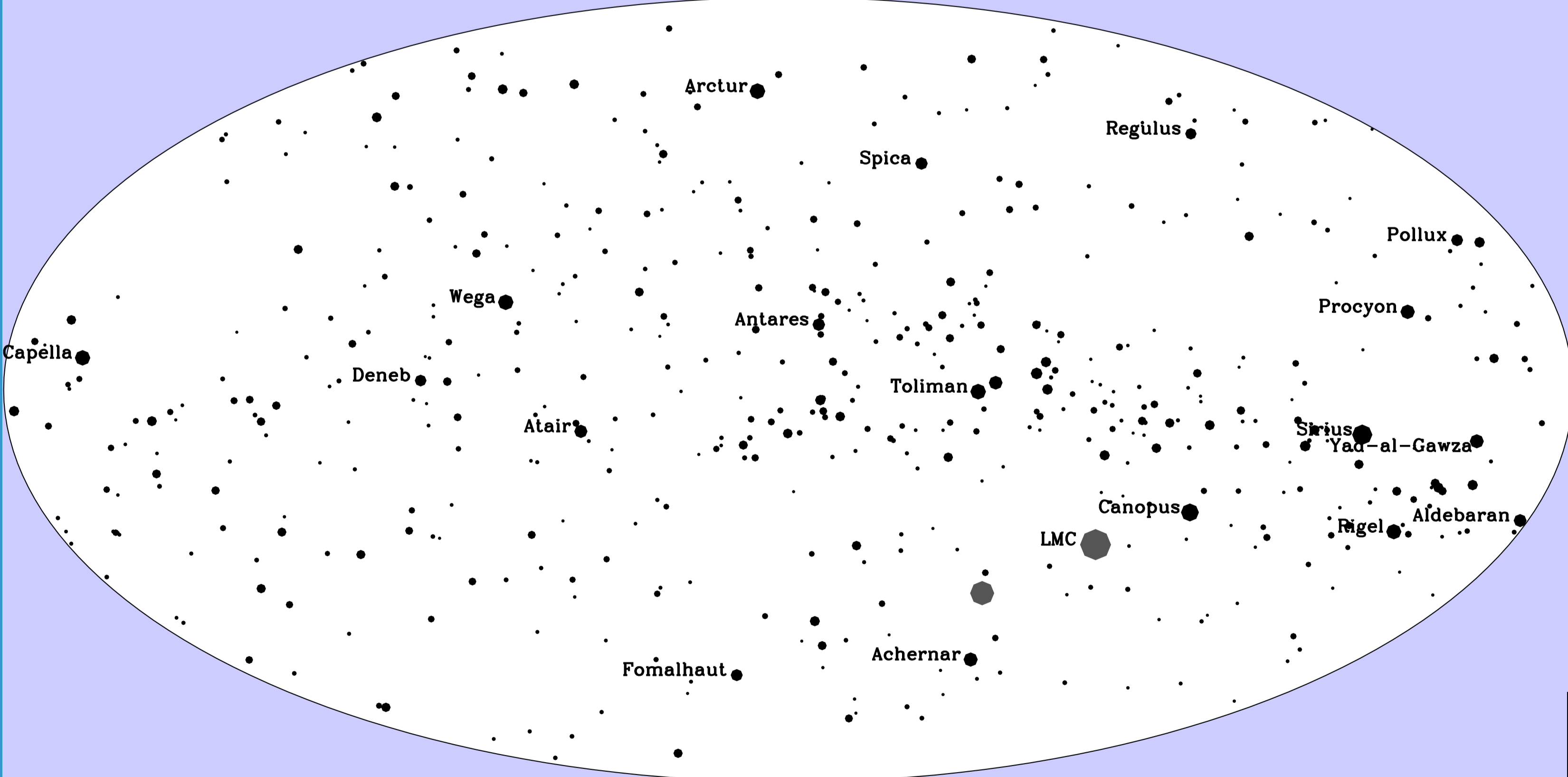
Röntgen



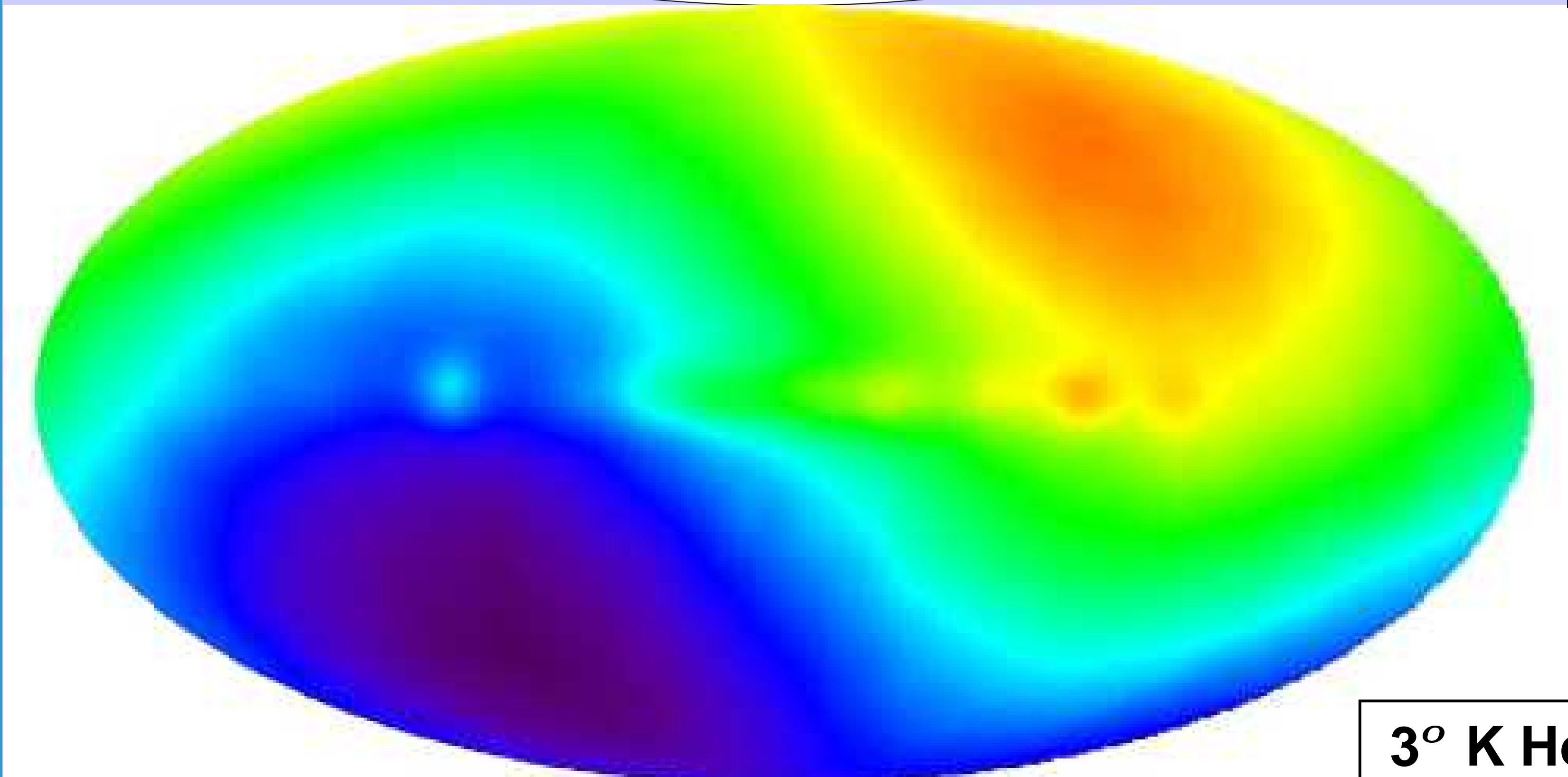
408 MHz

**Der HINIMMEL in FARBE**

1 km, 300 kHz — Radio  
 Antenne Brandenburg —  
 1 m, 300 MHz — Fernsehen  
 ORB —  
 21 cm —  
 3 K —  
 1 mm, 300 GHz —  
 Sie selbst — Infrarot  
 1  $\mu\text{m}$ , 1.2 eV —  
 Lyman  $\alpha$  — UV  
 1 nm, 1.2 keV — Roentgen  
 Fe, 6.7 keV —  
 $e^-e^+$  Annihilation — Gamma  
 1 pm, 1.2 MeV —



Visuell



3° K Horizont

